

**Local District Northwest
2022 - 2023**



Los Angeles Unified School District

**Alberto M. Carvalho
Superintendent**

**David Baca, Ed.D.
Interim Local District Superintendent**

**Margaret Kim, Ed.D.
Administrator of Instruction**

**Debra Bryant, Ed.D.
Administrator of Operations**

**6621 Balboa Blvd.
Lake Balboa, California 91406
Tel: (818) 654-3600**

**“Local District Northwest
Student and Families, Teachers, and Administrators Realizing Success”**

Table of Contents

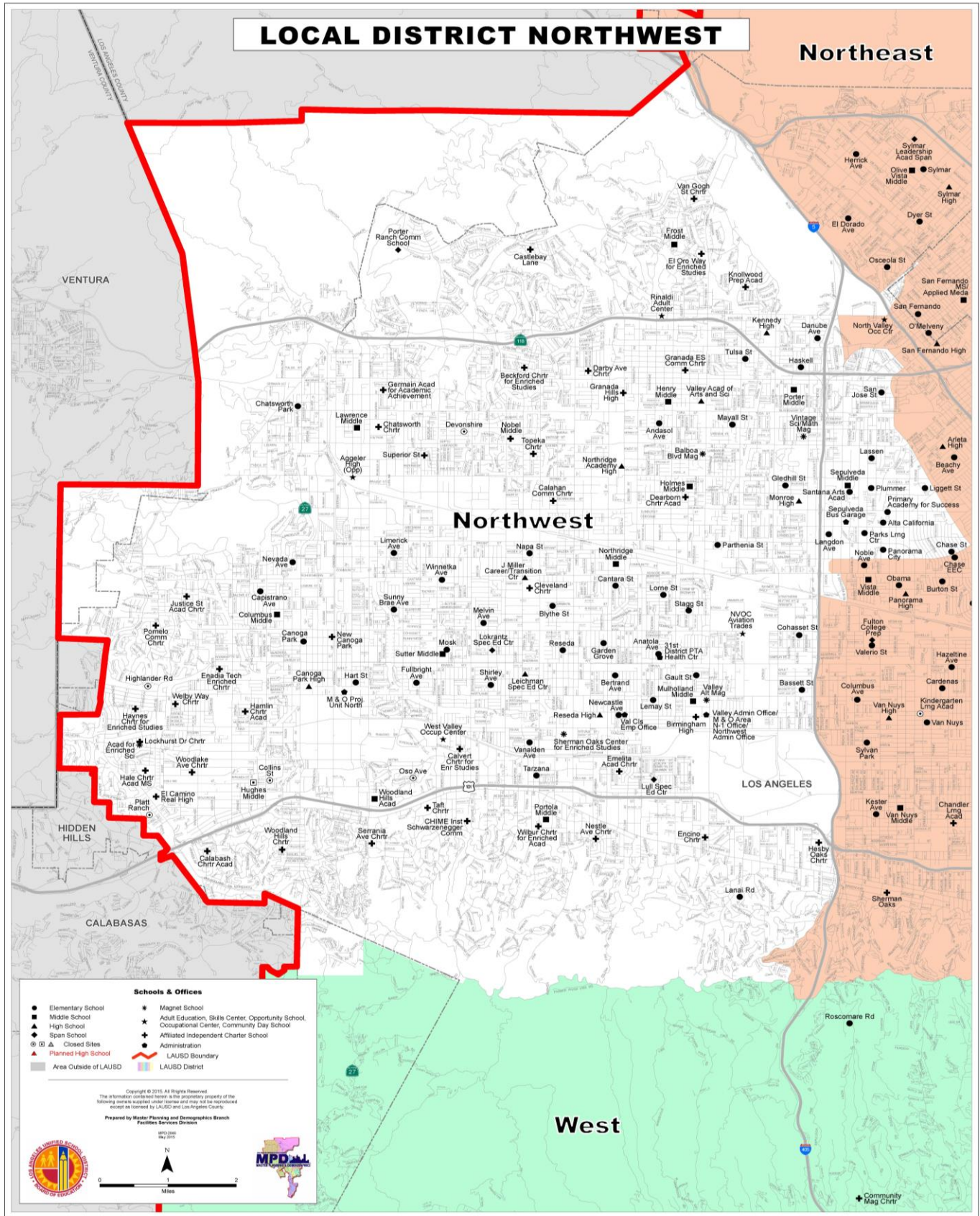
	Page
Local Districts Map	2
Single Track Instructional School Calendar	3
Local District Northwest Staff	4
Online Support and Resources	8
Local District Northwest Schools	9
Local District Northwest Community of Schools	10
Elementary Schools	12
Middle Schools	19
High Schools	20
Alternative Education Schools	22
Special Education Schools	22
Early Education Centers	23
LAUSD Virtual Academy	23

School Quick Links

[Payroll Calendars](#)

[Classified Evaluation System](#)

[Professional Learning & School Support Catalog](#)





LOS ANGELES UNIFIED SCHOOL DISTRICT
INSTRUCTIONAL SCHOOL CALENDAR 2022-2023

Board Approved
4/26/2022

JULY

MO	TU	WE	TH	FR
				1
4	5	6	7	8
11	12	13	14	15
18	19	20	21	22
25	26	27	28	29

AUGUST

MO	TU	WE	TH	FR
1	2	3	4	5
8	9	10	11	11
15	16	17	18	19
22	23	24	25	26
29	30	31		

SEPTEMBER

MO	TU	WE	TH	FR
			1	2
5	6	7	8	9
12	13	14	15	16
19	20	21	22	23
26	27	28	29	30

OCTOBER

MO	TU	WE	TH	FR
3	4	5	6	7
10	11	12	13	14
17	18	19	20	21
24	25	26	27	28
31				

NOVEMBER

MO	TU	WE	TH	FR
	1	2	3	4
7	8	9	10	11
14	15	16	17	18
21	22	23	24	25
28	29	30		

DECEMBER

MO	TU	WE	TH	FR
			1	2
5	6	7	8	9
12	13	14	15	16
19	20	21	22	23
26	27	28	29	30

JANUARY

MO	TU	WE	TH	FR
2	3	4	5	6
9	10	11	12	13
16	17	18	19	20
23	24	25	26	27
30	31			

FEBRUARY

MO	TU	WE	TH	FR
		1	2	3
6	7	8	9	10
13	14	15	16	17
20	21	22	23	24
27	28			

MARCH

MO	TU	WE	TH	FR
		1	2	3
6	7	8	9	10
13	14	15	16	17
20	21	22	23	24
27	28	29	30	31

APRIL

MO	TU	WE	TH	FR
3	4	5	6	7
10	11	12	13	14
17	18	19	20	21
24	25	26	27	28

MAY

MO	TU	WE	TH	FR
1	2	3	4	5
8	9	10	11	12
15	16	17	18	19
22	23	24	25	26
29	30	31		

JUNE

MO	TU	WE	TH	FR
			1	2
5	6	7	8	9
12	13	14	15	16
19	20	21	22	23
26	27	28	29	30

07/04/22	Independence Day	01/16/23	Dr. Martin L. King Jr. Birthday
08/15/22	First Day of Instruction	02/20/23	Presidents' Day
09/02/22	Admission Day	03/31/23	Cesar E. Chavez Birthday Observed
09/05/22	Labor Day	04/03 - 04/07/23	Spring Recess
11/11/22	Veterans Day	04/24/23	Armenian Genocide Observed
11/24 - 11/25/22	Thanksgiving Holiday	05/29/23	Memorial Day
12/19/22 - 01/06/23	Winter Recess	06/15/23	Last Day of Instruction
01/09/23	Second Semester Begins	06/19/23	Juneteenth Holiday

LEGEND:

	First Day/Last Day of Instruction
	Legal/Local Holidays
	School Recess
	Unassigned Day (no school)
	Pupil Free Days *
	Second Semester Begins
	Instructional Days
	Optional Professional Development Days (no school)
	Acceleration Days

Instructional Days

Fall Semester	78
Spring Semester	102
Total	180

* Scheduled Pupil Free Days are Friday, August 12, 2022, and Friday, June 16, 2023.
 ** If a school selects Monday, January 9, 2023, as a Pupil Free Day, then Friday, June 16, 2023, becomes an Instructional Day.

LOCAL DISTRICT NORTHWEST DIRECTORY

Office of the Superintendent			Fax: 881-6728
Dr. Baca, David	Superintendent		654-3600
Mojica, Gabriela	Administrative Assistant	gmoji3@lausd.net	654-3611
Beltrán-Kallem, Celina	Office Technician	celina.beltran@lausd.net	654-3600
Vacant	Senior Office Technician		654-3644
Moradi, Rocio	Senior Secretary	rocio.moradi@lausd.net	654-3660

Instruction			Fax: 881-6728
Dr. Kim, Margaret	Administrator of Instruction	margaret.kim@lausd.net	654-3615
Streif, Angelica	A-G Counseling Coordinator	axs03761@lausd.net	654-3665
Mella, Ramon	A-G Director	ramoncito.mella@lausd.net	654-3640
Shaath, Nada	Dual Language, EL Instruction Compliance & Coordinator	nada.shaath@lausd.net	654-3727
Oregel, Ana	Early Education Director	abo9100@lausd.net	654-3650
Terrien, John	EGI Advisor	jmr3396@lausd.net	654-3649
Saldana, Rocio	EL Compliance Coordinator	rocio.saldana@lausd.net	654-3700
Barajas, Pedro	EL Elementary Coordinator	pmb8799@lausd.net	654-3631
Casco, Denise	ELA Coordinator- Elementary	denise.casco@lausd.net	654-3624
Harrison, Jodi	ELA Coordinator- Secondary	jodi.harrison@lausd.net	654-3630
Stevens, Josie	Equity Director	josephine.stevens@lausd.net	654-3694
Ayala, Alejandra	Instructional Coordinator	alejandra.ayala@lausd.net	654-3673
Chang, Jeanny	Instructional Coordinator	jxc6855@lausd.net	654-3648
Powell, Stefanie	Instructional Coordinator	stephanie.powell@lausd.net	654-3717
Victorio, Vanessa	Instructional Coordinator	vanessa.victorio@lausd.net	654-3567
Ramírez, Nilsson	Instructional Data Coordinator	nilsson.ramirez@lausd.net	654-3730
Allen, Steve	Math Coordinator- Elementary	steve.allen@lausd.net	654-3687
Oduwole, LaDonna	Math Coordinator- Secondary	ladonna.white@lausd.net	654-3647
Vega, Jerald	Social Emotional Learning Advisor	jerald.vega@lausd.net	758-1003
Burnett, Theresa	Standard EL Coordinator	tsp5380@lausd.net	654-3668
Sims, Chris	STEAM Coordinator	christopher.sims@lausd.net	654-3621
Whang, Elijah	STEAM Coordinator	exw2588@lausd.net	654-3616
Reams, Kathleen	Teacher Quality Specialist	klr6454@lausd.net	654-3617
Riquelme, Cecilia	Title I Coordinator	criquelm@lausd.net	654-3664
Sanchez, Joel	Title I Coordinator	jis1423@lausd.net	654-3658

School Operations			Fax: 881-0527
Dr. Bryant, Debra	Administrator of Operations	ddb0437@lausd.net	654-3670
Valdez, Jasmin	Administrative Assistant	jav5233@lausd.net	654-3670
Arroyo, Temo	Lead Operations Coordinator	cx6122@lausd.net	654-3651
Gardin, Sherman	Operations Coordinator	sdg9452@lausd.net	654-3642
Mellado, Aurora	Operations Coordinator	aam7365@lausd.net	654-3625
Fu, Jonathan	Public Information Officer	jonathan.fu@lausd.net	654-3635
Gonzalez, Jeremiah	COVID Testing and Operations Coordinator	jjg2443@lausd.net	654-3601 213-760-8084

Parent and Community Engagement			Fax: 881-6728
Garay, Gonsálo	Administrator	ggg9445@lausd.net	654-3608
Lozano, Fabiola	Community Representative	fabiola.lozano@lausd.net	758-1007

School Mental Health			Fax: 881-0527
Jimenez, Elena	School Mental Health Coordinator	elena.jimenez@lausd.net	654-3652
Morales, Emma	School Mental Health Specialist	eem0776@lausd.net	654-3718
Ceja Zamora, Maribel	Mental Health Consultant	maribel.cejazamora@lausd.net	654-3620
Vacant	Mental Health Consultant		654-3715
Cooper, Miriela	Mental Health Consultant	miriela.cooper@lausd.net	654-3705
Ehsan-Sayson, Azin	Mental Health Consultant	azin.ehsan-sayson@lausd.net	654-3637
Knee-Guine, Leda	Mental Health Consultant	leda.knee@lausd.net	654-3633
Thomas, Jill	Mental Health Consultant	jill.thomas@lausd.net	654-3627

Health and Human Services			Fax: 758-9961
Mitchell, Eileen	Nursing Services Specialist	eileen.mitchell@lausd.net	654-1670
Contreras Zuniga, David	PSA Aide	d.contreraszunig@lausd.net	654-3716
Arciniega, Jocelyn	PSA Aide- Student Support Prog	jocelyn.arciniega@lausd.net	654-3725
Barajas, Yesenia	PSA Aide- Student Support Prog	yesenia.barajas@lausd.net	(213) 725-5600 Ext 4227
Olvera, Lucio	PSA Aide- Student Support Prog	lucio.olvera@lausd.net	654-3704
Ash, Dionne	PSA Coordinator	dionne.ash@lausd.net	654-3693
Arriaza, Haide	PSA Coordinator, City Partnership	haide.arraiza@lausd.net	654-3632
Gallegos, Crystal	PSA Lead Counselor	crystal.gallegos@lausd.net	654-3604
Woods, Brittany	PSA Lead Counselor	brittany.woods@lausd.net	654-3623
Castro, Andres	PSA Specialist	andres.castro@lausd.net	654-3612

Ferry, Justine	SARB Chair	justine.ferry@lausd.net	758-1005
Castillo, Hector	Student Support Program Aide	hxc4652@lausd.net	654-3722
Mitchell, Nicole	Student Support Program Coordinator	nkm2268@lausd.net	654-3723
Gonzalez, Yessenia	Student Support Program Lead Counselor	y.gonzalez1@lausd.net	654-3731
Blum, Marta	Title I Homeless Education Counselor	mmb0151@lausd.net	654-3657

Organization Facilitator			Fax: 881-0527
Jamison-Dinowitz, Nicole	Cleveland and Taft CoS	nicole.jamison@lausd.net	668-1221
Bedevian, Harry	CP/Chatsworth and KNV CoS	hbedevia@lausd.net	654-3677
Salazar, Anna	Monroe CoS	ams9146@lausd.net	668-1219
Martinez, Nubia	Reseda CoS	nubia.martinez@lausd.net	668-1220

Business Services			Fax: 881-6728
Navarro, Evangeline	Coordinating Financial Manager	evangeline.navarro@lausd.net	654-3709
Foster, Robin	Fiscal Services Manager	robin.foster@lausd.net	654-3710
Njehiah, Domenic	Fiscal Specialist	domenic.njehiah@lausd.net	654-3662
Perida, Jovan	Fiscal Specialist- Senior	jose.perida@lausd.net	654-3703
Nikolyan, Maria	Fiscal Specialist	maria.nikolyan@lausd.net	654-3653
Shu, Sue	Fiscal Specialist	sue.shu@lausd.net	654-3706
Nguyen, Theresa	LD Northwest Buyer	theresa.nguyen1@lausd.net	654-3719

Food Services			Fax: 881-6728
Jaye, Karen	More Than a Meal Liaison	kjaye@lausd.net	654-3670
Parlen, Marilyn	More Than a Meal Liaison	marilyn.parlen@lausd.net	654-3670
Horowitz, Jason	Reginal Food Services Manager	jason.horowitz@lausd.net	654-3667

Special Education			Fax: 881-6728
Kendrick, Lisa	Administrator Special Education	lisa.kendrick@lausd.net	654-3672
Stoller, Beth	Psychological Services Coordinator	elizabeth.stoller@lausd.net	654-5039
Castillo, Elizabeth	Office Technician	Pending	654-3615

GATE			Fax: 881-0527
Vega, Monica	Designated Psychologist	mkv2382@lausd.net	654-3634
Webb, Sarah	Designated Psychologist	sew3303@lausd.net	654-3721
Wong-Cheng, Wynne	GATE Program Coordinator	wynne.wong@lausd.net	654-3613

Facilities			Fax: 654-3560
Gene, Hernandez	LD Area Facilities Services Director	gene.hernandez@lausd.net	654-3591
Johnson, Steve	Regional Facilities Director	steven.johnson@lausd.net	654-3680
Arriaza, Wilson	CPM Birmingham / Reseda	wilson.arriaza@lausd.net	758-1052
Saldivar, Rudy	CPM El Camino/Taft/Canoga	rodolfo.saldivar@lausd.net	654-3790
Rackliffe, Ron	CPM Cleveland	ronald.rackliffe@lausd.net	654-3555
Fallat, Paul	CPM Chatsworth	paul.fallat@lausd.net	654-3751
McLaughlin, Steve	CPM Granada Hills/ Northridge	steve.mclaughlin@lausd.net	654-3764
Pinto, Mauricio	CPM Kennedy/Monroe	mpinto2@lausd.net	654-3681
Covarrubias, Rosalba	Safety Officer, OEHS	rosalba.covarrubias@lausd.net	(213) 241-5141
Oguine, Debra C.	Senior Officer, OEHS	debra.oguine@lausd.net	(818) 654-3719

Staff Relations			Fax: 881-0527
Davtyan, Zhanna	Classified Staff Relations	zhanna.davtyan@lausd.net	Microsoft Teams
Martinez, Adan	Field Director	adan.martinez@lausd.net	654-3641
Delisle, Carrie	Field Director	carrie.delisle@lausd.net	654-3619

ITD		ITD HELPDESK – http://helpdesk.lausd.net	
Samuels, Jacqueline	IT Liaison- CP/Chatsworth, Cleveland, Monroe CoS	jacqueline.samuels@lausd.net	654-3614
Beristain, Mark	IT Liaison- KNV, Reseda, Taft CoS	mark.beristain@lausd.net	213-264-2482
NW IT Support	ITD Distribution List	nw/itsupport@lausd.net	

ITD HELPDESK – (213) 241-5200; Monday - Friday, 7:30 AM – 4:45 PM

MAIN MENU OPTIONS	
Computers or Hybrid classroom equipment	Option 1
All password issues	Option 2
Payroll or Benefits support	Option 3
Facilities Services Division support	Option 4
Student Information Systems, MiSiS, Schoology, DACE-SIS, or Independent Charter Suspension Expulsion	Option 5
Budget and Financial assistance	Option 6
Procurement questions including travel	Option 7
Other issues not listed	Option 8

ONLINE SUPPORT AND RESOURCES

<u>Payroll Support Services</u>		Phone: (213) 241-2570 Fax: (866) 761-741
Employee Self Service		https://ESS.lausd.net
Payroll Pay Request		PayrollPayRequest@lausd.net
Payroll Support		payrollsupport@lausd.net
SAP Security Team		sapsecurityteam@lausd.net
SAP Security Access Request		Request for SAP Security Access Job Aid

<u>Classified Employment Services Branch</u>		Phone: (213) 241-7800
Claudia Ascencio	Classified Assignment Tech	claudia.ascencio@lausd.net 213- 241-6311
Elva Pamintuan	Supervising Assignment Tech	elva.pamintuan@lausd.net 213-241-6320
Stacie Foote	Special Education	stacie.foote@lausd.net 213-241-6314
Iardry Zeigler	Community Rep, School Supervision Aides	iardry.zeigler@lausd.net 213-241-7882
Marcela Calderon	B &G Worker, Plant Managers, Custodial	marcela.calderon@lausd.net 213- 241-6377
Lorena Estrella	Early Education	lorena.estrella@lausd.net 213-241-5530
Kevin Cordero	Food Services	kevin.cordero1@lausd.net 213- 241-6371
SFE Online Classified Sub Request		SFE System Telephone number: 866-477- 3233 For SFE technical assistance: 213-241-7808

<u>Human Resources Division (Certificated Personnel)</u>		Phone: (213) 241-5100
Elise Cho	Personnel Specialist	esc8642@lausd.net 213-241-5100
Beatriz Smissen	Personnel Specialist	bsmissen@lausd.net 213-241-5100
Marina Monico	TA Assignment Technician	marina.monico@lausd.net 213- 241-4938
TA Unit Website		teacherassistant@lausd.net 213- 241-1498

<u>Certificated Substitute Helpdesk (Sub Unit)</u>		Phone: (213) 241-6117 Fax: (213) 241-8410
Carlos Romero	LAUSD Certificated Substitute	carlos.romero@lausd.net 213-241-6029
Jorge Amador	Assistant Director LAUSD Certificated Substitute	jorge.amador@lausd.net 213-241-6029
Sub Finder Desk	SmartFindExpress	subdesk@lausd.net 877-528-7378
SmartFindExpress Registration Job Aid		Online Sub Request

<u>Transportation Services Division</u>		Phone: (800) LA-BUSES (800) 522-8737
Customer Service Field Trip Confirmations School Bus Routes	Dispatch	transportation.branch@lausd.net 800-522-8737 213-580-2900
Field Trips	Online Field Trip System	ifieldtrip@lausd.net 213- 580-2910

LOCAL DISTRICT NORTHWEST SCHOOLS

ACAD FOR ENRCH SCI	DEARBORN EL CA	LEMAY EEC	RESEDA EL
ADDAMS HS	EINSTEIN HS	LEMAY EL	RESEDA SH
AGGELER HS	EL ORO WAY CHTR CES	LIGGETT EL	SAN JOSE EL
ALTA CALIFORNIA EL	EMELITA ACADEMY CHTR	LIMERICK EL	SANTANA ARTS ACADEMY
ANATOLA EL	ENADIA TECH ENR CHTR	LOCKHURST DR CHTR EL	SEPULVEDA MS
ANDASOL EL	ENCINO CHARTER EL	LOKRANTZ SP ED CTR	SERRANIA CES
BALBOA G/HA MAG	FROST MS	LORNE EL	SHIRLEY EL
BASSETT EL	FULLBRIGHT EL	MAYALL EL	SOCES MAG
BECKFORD CHTR ENR ST	GARDEN GROVE EL	MELVIN EL	STAGG EL
BERTRAND EL	GAULT EL	MILLER CTC	STONEY POINT HS
BLYTHE EL	GERMAIN ACAD AA	MONROE SH	SUNNY BRAE EL
CALABASH CA	GLEDHILL EEC	MOSK EL	SUPERIOR EL
CALAHAN COMMUNITY CH	GLEDHILL EL	MULHOLLAND MS	SUTTER MS
CALVERT CHTR FOR ES	GRANADA COMMUNITY CH	NAPA EL	TAFT CHARTER HS
CANOGA PARK EEC	GREY HS	NESTLE AVE CHARTER	TARZANA EL
CANOGA PARK EL	HALE CA	NEVADA EL	THOREAU HS
CANOGA PARK SH	HAMLIN CA	NEWCASTLE EL	TOPEKA DR EL
CANTARA EL	HART ST EL	NOBEL MS	TULSA EL
CAPISTRANO EL	HASKELL EL	NORTHRIDGE ACAD SH	VALLEY ACAD ARTS/SCI
CASTLEBAY LN EL	HAYNES CES	NORTHRIDGE EEC	VALLEY ALTERN MAG
CDS AGGELER	HENRY MS	NORTHRIDGE MS	VAN GOGH EL
CHASE EEC	HESBY OAKS LEAD CHTR	OWENSMOUTH HS	VANALDEN EEC
CHASE EL	HOLMES MS	PANORAMA CITY EL	VANALDEN EL
CHATSWORTH CHTR HS	INDEPENDENCE HS	PARKS LC	VINTAGE MATH/SCI MAG
CHATSWORTH PARK EL	JUSTICE ST ACAD CHTR	PARTHENIA EL	WELBY WAY EL CS
CLEVELAND CHTR HS	KENNEDY SH	PEARL JOURN/COMM MAG	WILBUR EL
CLEVELAND EEC	KNOLLWOOD PREP ACAD	PLUMMER EL	WINNETKA EL
CLEVELAND INFANT CTR	LANAI EL	POMELO COMMUNITY CS	WOODEN HS
COHASSET EL	LANGDON EL	PORTER MS	WOODLAKE EL
COLUMBUS MS	LASSEN EL	PORTER RANCH SCHOOL	WOODLAND HILLS ACAD
DANUBE EL	LAWRENCE MS	PORTOLA MS	WOODLAND HILLS CES
DARBY AVE CHARTER	LEICHMAN SP ED CTR	PRIMARY ACADEMY	

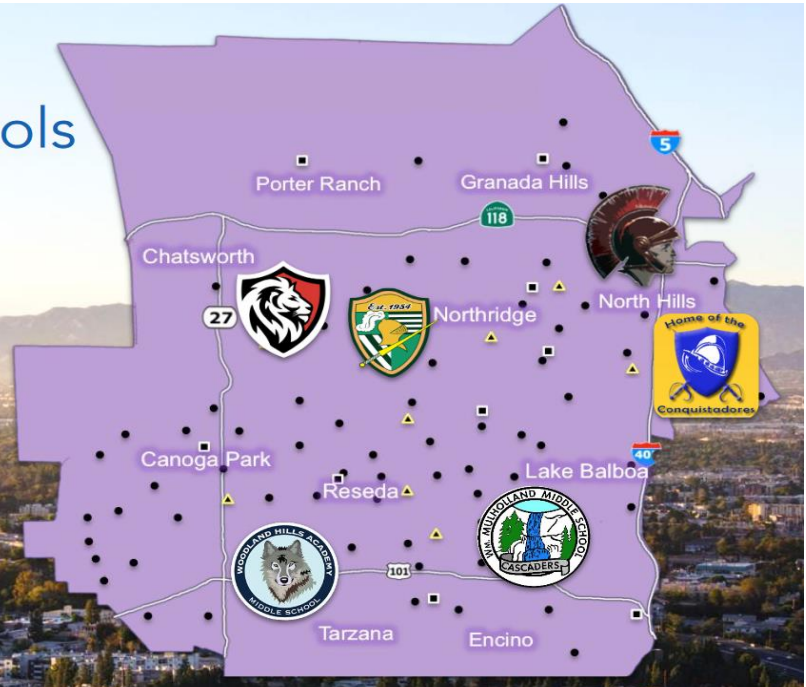
COMMUNITY OF SCHOOLS

Mary Melvin Canoga Park/ Chatsworth Community of Schools	Debra McIntyre-Sciarrino Cleveland Community of Schools	Scott Braxton Kennedy/NAHS/VAAS Community of Schools	Roger Avila Monroe Community of Schools	Eric Maxey Reseda Community of Schools	Denise Collier Taft Community of Schools
Sherman Gardin	Aurora Mellado	Aurora Mellado	Temo Arroyo	Sherman Gardin	Temo Arroyo
Jill Thomas	Jennifer Sanchez	Miriela Cooper	Maribel Ceja-Zamora	Azin Ehsan-Sayson	Leda Knee-Guine
Vacant	Tina Valdez	Annette Townsell	Heather Miles	Amelia Cumulada	Vacant
Crystal Gallegos	Brittany Woods	Justine Ferry	Justine Ferry	Brittany Woods	Crystal Gallegos
Jack Klein	Vacant	Vacant	Elizabeth Chavez	Elizabeth Chavez	Jack Klein
Jovan Perida	Maria Nilolyan	Sue Shu	Jovan Perida	Sue Shu	Dominic Njehiah
Adan Martinez	Carrie Delisle	Adan Martinez	Carrie Delisle	Carrie Delisle	Carrie Delisle
Harry Bedevian	Nicole Jamison-Dinowitz	Harry Bedevian	Anna Salazar	Nubia Martinez	Nicole Jamison-Dinowitz
Paul Fallat	Ron Rackliffe	Steve McLaughlin	Mauricio Pinto	Wilson Arriaza	Rudy Saldivar
Aggeler CDS *(3) Aggeler HS *(3) Beckford ES (3) SM Canoga Park EEC (3) AO, RS Canoga Park ES *(3) RS Canoga Park HS *(3) WA Capistrano ES *(3) RS Chatsworth CHS *(3) Chatsworth Pk ES *(3) Columbus MS *(3) RS Enadia Way ES *(3) RS Germain ES *(3) Hamlin ES *(3) RS Hart ES *(3) RS Lawrence MS *(3) Nevada ES *(3) Nobel MS *(3) SM Owensmouth HS *(3) RS Porter Ranch SPAN (3) Stoney Point HS *(3) Superior ES *(3) Topeka ES (3) Total = 22	Anatola ES *(3) Blythe ES *(3) Calahan ES *(3) PF Cantara ES *(3) Cleveland CHS *(3) Cleveland EEC (3) AO Cleveland Infant Ctr (3) AO Fullbright ES *(4) Limerick ES *(3) PF Lorne ES *(3) SM Melvin ES *(3) PF Miller CTC *(3) Mosk ES *(4) PF Napa ES *(3) PF Northridge EEC (3) AO Northridge MS *(3) Pearl HS Jrnl's/Cmm *(3) WA Stagg ES *(6) SM Sunny Brae ES *(3) Sutter MS *(4) PF Winnetka ES *(3) PF Wooden HS *(3) Total = 22	Addams HS *(3) MP, MN Andasol ES *(3) Balboa ES (3) Castlebay Lane ES (3) Danube ES *(3) MP, MN Darby ES *(3) El Oro Way ES (3) Frost MS *(3) Granada ES *(3) Haskell ES *(3) MP, MN Henry MS *(3) Kennedy HS *(3) MP Knollwood ES *(3) MN Mayall ES *(3) MN Northridge Ac. HS*(3) MN Porter MS *(3) MP, MN San Jose ES *(6) MN Tulsa ES *(3) MN VAAS HS *(3) MN Van Gogh ES (3) MN Total = 20	Alta Ca ES *(6) Chase EEC (6) AO, Chase ES *(6) Cohasset ES *(3) RR Dearborn ES *(3) SM Einstein HS *(6) Gledhill EEC (6) AO Gledhill ES *(6) Holmes MS *(3) SM Langdon ES *(6) Lassen ES *(6) Liggett ES *(6) Monroe HS *(6) Panorama City ES *(6) Parthenia Acad Arts & Tech *(3) SM Plummer ES *(6) Primary Academy *(6) Rosa Parks LC *(6) Santana ES *(6) Sepulveda MS *(6) Vintage ES *(3) Total = 21	Acad.for Enr.Sci. (3) Bassett ES *(3) RR Bertrand ES *(4) RR Emelita ES *(4) RR Garden Grove ES *(4) RR Gault ES *(3) RR Grey HS *(4) Hesby Oaks Leadership (4) Independence HS *(3) Lake Balboa College Prep *(3) Leichman CTC *(4) RR Lemay EEC (3) AO Lemay ES *(3) Lokrantz Spec ED *(3) RR Mulholland MS *(3) Newcastle ES *(4) Reseda ES *(4) RR Reseda CHS *(4) Sherman Oaks CES *(4) Shirley ES *(4) RR Tarzana ES *(4) Vanalden EEC (4) AO Vanalden ES *(4) Total = 23	Calabash ES (3) Calvert ES *(4) WA Encino ES (4) WA Hale MS (3) Haynes ES (3) Justice ES (3) Lanai Road ES (4) WA Lockhurst ES (3) Nestle ES *(4) WA Pomelo ES (3) Portola MS *(4) WA Serrania ES (4) Taft HS *(4) Thoreau HS *(4) Welby Way ES (3) Wilbur ES (4) WA Woodlake ES (3) Woodland Hills Aca *(4) Woodland Hills CES (4) Total = 19

Legend	
Affiliated Charter	Staff Relations
(Board District #)	CPM's
Early Ed Center Director	MP - Mauricio Pinto
AO-Ana Oregel	PF - Paul Fallat
Fiscal Specialist	RR - Ron Rackliffe
MN- Maria Nikoloya	
LRE Specialists	RS- Rudy Saldivar
Operations Coordinators	SM - Steve McLaughlin
Mental Health Consultants	WA - Wilson Arriaza
PACE - Parent Coaches	Title I Schools *
Organization Facilitators	

Community of Schools

- Canoga Park/Chatsworth
- Cleveland
- Kennedy/NAHS/VAAS
- Monroe
- Reseda
- Taft



Community of Schools Canoga Park/Chatsworth	Office Location: Lawrence MS 10100 Variel Ave. Chatsworth, 91311 Cost Center: 1351201	(747) 224-4581 Fax: (818) 440-0062 canogacos.lausd.net
Melvin, Mary	CoS Administrator	mary.melvin@lausd.net
Vacant	LRE Specialist	Pending
Fitzgerald, Kimberly	Office Technician	k.fitzgerald@lausd.net
Klein, Jack	PACE Coach	jdk98662@lausd.net
Park Lee, Alice	Parent Education Support Assistant	alice.lee@lausd.net
Richards, Chad	Program Specialist	cdr1615@lausd.net
Gillikin, Patricia	Systems of Support Adviser	plg4613@lausd.net
Thomas, Jill	School Mental Health Consultant	jill.thomas@lausd.net

Community of Schools Cleveland	Office Location: Northridge MS 17960 Chase St. Northridge, 91325 Cost Center: 1351301	(818) 428-4931 Fax: (818) 440-0064 clevelandcos.lausd.net
McIntyre-Sciarrino, Debra	CoS Administrator	dsm1828@lausd.net
Valdez, Tina	LRE Specialist	thv8816@lausd.net
Del Real, Vanessa	Office Technician	vanessa.delreal@lausd.net
Vacant	PACE Coach	Vacant
Soliman, Sally	Parent Education Support Assistant	sally.soliman@lausd.net
Jaghelian, Sara	Program Specialist	sara.jaghelian@lausd.net
Escamilla, Omar	Systems of Support Adviser	omar.escamilla@lausd.net
Vacant	School Mental Health Consultant	

Community of Schools Kennedy/NAHS/VAAS	Office Location: Porter MS 15960 Kingsbury St. Granada Hills, 91344 Cost Center: 1351401	(818) 672-4501 Fax: (818) 672-4502 knvcos.lausd.net
Braxton, Scott	CoS Administrator	scott.braxton@lausd.net
Townsell, Annette	LRE Specialist	annette.townsell@lausd.net
Dodon, Julie Ann	Office Technician	Pending
Vacant	PACE Coach	Vacant
Vinas, Kate	Parent Education Support Assistant	kate.vinas@lausd.net
Bachamp, Craig	Program Specialist	crb3209@lausd.net
Bell, Sylvia	Systems of Support Adviser	sylvia.bell@lausd.net
Cooper, Miriela	School Mental Health Consultant	miriela.cooper@lausd.net

Community of Schools Monroe	Office Location: Sepulveda MS 15330 Plummer St. North Hills, 91343 Cost Center: 1351501	(818) 672-4521 Fax: (818) 440-0070 monroecos.lausd.net
Avila, Roger	CoS Administrator	ravi13@lausd.net
Miles, Heather	LRE Specialist	heather.miles@lausd.net
Gomez, Karen	Office Technician	k.gomezsanchez@lausd.net
Chavez, Elizabeth	PACE Coach	elizabeth.chavez2@lausd.net
Deleo, Suemi	Parent Education Support Assistant	suemi.deleo@lausd.net
Tori Ko	Program Specialist	suh.yoon@lausd.net
Vacant	Systems of Support Adviser	vacant
Ceja Zamora, Maribel	School Mental Health Consultant	maribel.cejazamora@lausd.net

Community of Schools Reseda	Office Location: Mulholland MS 17120 Vanowen St. Van Nuys, 91406 Cost Center: 1352401	(818) 668-1051 Fax: (818) 609-2575 resedacos.lausd.net
Maxey, Eric	CoS Administrator	eim9800@lausd.net
Cumulada, Amelia	LRE Specialist	amelia.cumulada@lausd.net
Gomez, Karen	Office Technician	k.gomezsanchez@lausd.net
Chavez, Elizabeth	PACE Coach	elizabeth.chavez2@lausd.net
Vega Bonilla, Monica	Parent Education Support Assistant	m.vegabonilla@lausd.net
Duarte, Paulette	Program Specialist	pvd0795@lausd.net
Leiberman, Stacy	Systems of Support Adviser	slieberm@lausd.net
Ehsan-Sayson, Azin	School Mental Health Consultant	azin.ehsan-sayson@lausd.net

Community of Schools Taft	Office Location: Woodland Hills Acad 20800 Burbank Blvd. Woodland Hills, 91367 Cost Center: 1351601	(747) 288-4171 Fax: (818) 440-0073 taftcos.lausd.net
Collier, Denise	CoS Administrator	denise.collier@lausd.net
Vacant	LRE Specialist	vacant
Fitzgerald, Kimberly	Office Technician	k.fitzgerald@lausd.net
Klein, Jack	PACE Coach	jdk98662@lausd.net
Vacant	Parent Education Support Assistant	vacant
Friedman, Susan	Program Specialist	susan.x.friedman@lausd.net
Shiva, Sarah	Systems of Support Adviser	sxs8693@lausd.net
Knee-Guine, Leda	School Mental Health Consultant	leda.knee@lausd.net

ELEMENTARY SCHOOLS

ACAD FOR ENRCH SCI MAG (2250) 17551 Miranda St. Encino, 91316	PRINCIPAL Assistant Principal, EIS Administrative Assistant	AMY PETRY Amy Besser Mina Lotfi	Telephone: 609-8421 Fax: 609-8424 Reseda CoS
ALTA CAL ES/G STEAM MAG (7398) 14859 W. Rayen St. Panorama City, 91402	PRINCIPAL Assistant Principal Assistant Principal, EIS Administrative Assistant	JOSE BENITEZ Ashley Bonilla Roxanna Arechiga Maylin Miranda	Telephone: 830-4400 Fax: 891-3414 Monroe CoS
ANATOLA ES (2110) 7364 Anatola Ave. Van Nuys, 91406	PRINCIPAL Assistant Principal, EIS Administrative Assistant	JENNIFER STONE Brian Anderson Hortencia Perez	Telephone: 343-8733 Fax: 344-1550 Cleveland CoS
ANDASOL ES (2117) 10126 Encino Ave. Northridge, 91325	PRINCIPAL Assistant Principal Assistant Principal, EIS Administrative Assistant	VERONICA GONZALEZ Kristi Marr Anna Kojaoghlanian Barbara Tena	Telephone: 349-8631 Fax: 886-7156 Kennedy/NAHS/VAAS CoS
BALBOA G/HG/HA MAGNET (2269) 17020 Labrador St. Northridge, 91325	PRINCIPAL Assistant Principal, EIS Assistant Principal Administrative Assistant	CHRISTINE CHUN Inga Eguizzarian Karen Marroquin- Kim Paula Hansen	Telephone: 349-4801 Fax: 993-3470 Kennedy/NAHS/VAAS CoS
BASSETT ES (2323) 15756 Bassett St. Van Nuys, 91406	PRINCIPAL Assistant Principal Assistant Principal, EIS Administrative Assistant	CARL CHRISTOFF Vacant Maria Zia Owen Jatico	Telephone: 782-1340 Fax: 782-8681 Reseda CoS
BECKFORD CES (2335) 19130 Tulsa St. Northridge, 91326	PRINCIPAL Assistant Principal, EIS Administrative Assistant	SHELLY BROWER Matthew Orkin Stella Vigodnier	Telephone: 360-1924 Fax: 832-9831 CP/Chatsworth CoS
BERTRAND ES (2438) 7021 Bertrand Ave. Reseda, 91335	PRINCIPAL Assistant Principal, EIS Administrative Assistant	SYLVIA GUZMAN Xochilt Ismagil Amalia Longoria	Telephone: 342-1103 Fax: 609-8761 Reseda CoS
BLYTHE ES (2470) 18730 Blythe St. Reseda, 91335	PRINCIPAL Assistant Principal, EIS Administrative Assistant	DUSTIN MERRITT Zina Dixon Sanaz Palacios	Telephone: 345-4066 Fax: 344-1637 Cleveland CoS
CALABASH CHARTER ACAD (2704) 23055 Eugene St. Woodland Hills, 91364	PRINCIPAL Assistant Principal, EIS Administrative Assistant	ESTHER GILLIS Karen Mullin Kimberly Zenner	Telephone: 224-4430 Fax: 225-9385 Taft/Hale CoS
CALAHAN ST ES (2706) 18722 Knapp St. Northridge, 91326	PRINCIPAL Assistant Principal, EIS Administrative Assistant	MICHELLE WELLS Daniel Hernandez Katrina Ramos	Telephone: 886-4612 Fax: 886-0760 Cleveland CoS
CALVERT CHARTER CES (2712) 19850 Delano St. Woodland Hills, 91367	PRINCIPAL Assistant Principal, EIS Administrative Assistant	DAVID ESQUENAZI PEREZ Amy Adams Damaris Mayorga	Telephone: 347-2681 Fax: 347-5301 Taft/Hale CoS
CANOGA PARK ES (2753) 7438 Topanga Canyon Blvd. Canoga Park, 91303	PRINCIPAL Assistant Principal Assistant Principal, EIS Administrative Assistant	SANDRA QUINTANILLA Ritma Estupiñan Ricardo Ayala Vacant	Telephone: 340-3591 Fax: 592-0845 CP/Chatsworth CoS

CANTARA ES (2767) 17950 Cantara St. Reseda, 91335	PRINCIPAL Assistant Principal, EIS Administrative Assistant	MELANIE KARABEDIAN Danny J. Chavez-Perez Maribel Morales	Telephone: 342-5191 Fax: 344-1214 Cleveland CoS
CAPISTRANO ES (2802) 8118 Capistrano Ave. Canoga Park, 91304	PRINCIPAL Assistant Principal, EIS Administrative Assistant	SONJA CAO-GARCIA Marisa Ayola Rosa Lopez	Telephone: 883-8981 Fax: 340-2187 CP/Chatsworth CoS
CASTLEBAY LN CHARTER ES (2881) 19010 Castlebay Lane Northridge, 91326	PRINCIPAL Assistant Principal Assistant Principal, EIS Administrative Assistant	DAVID PRICE Theresa Stauffer Nicole Bootel Yessenia Arias	Telephone: 360-1908 Fax: 831-5492 Kennedy/NAHS/VAAS CoS
CHASE ES (3014) 14041 Chase St. Panorama City, 91402	PRINCIPAL Assistant Principal Assistant Principal, EIS Administrative Assistant	ROSEMARY MENA Abigail Flores Morena Camp Cynddi Covarrubias	Telephone: 830-4440 Fax: 892-8136 Monroe CoS
CHATSWORTH PARK ES (3027) 22005 Devonshire St. Chatsworth, 91311	PRINCIPAL Assistant Principal, EIS Administrative Assistant	DAVID GARRINGER Matthew Orkin Emily Navarro	Telephone: 341-1371 Fax: 882-3540 CP/Chatsworth CoS
COHASSET ES (3137) 15810 Saticoy St. Van Nuys, 91406	PRINCIPAL Assistant Principal Assistant Principal, EIS Administrative Assistant	ANDREA YAHUDIAN Mari Arutyunyan Jose Herrera Jane Vowels	Telephone: 787-2113 Fax: 782-3522 Monroe CoS
DANUBE ES (3335) 11220 Danube Ave. Granada Hills, 91344	PRINCIPAL Assistant Principal, EIS Administrative Assistant	MARK DYEN Heide Felix Zoila Martinez	Telephone: 366-6463 Fax: 363-4047 Kennedy/NAHS/VAAS CoS
DARBY AVE ES (3340) 10818 Darby Ave. Northridge, 91326	PRINCIPAL Assistant Principal, EIS Administrative Assistant	LUCY LEE Inga Eguizzarian Cynthia Vega	Telephone: 360-1824 Fax: 832-9761 Kennedy/NAHS/VAAS CoS
DEARBORN CHARTER ACADEMY (3377) 9240 Wish Ave. Northridge, 91326	PRINCIPAL Assistant Principal Assistant Principal, EIS Administrative Assistant	GEORGE FUENTES Alana Burton Ihuaku Ogbuagu Soheir Rizk	Telephone: 349-4381 Fax: 886-2149 Monroe CoS
EL ORO WAY CHARTER CES (3545) 12230 El Oro Way Granada Hills, 91344	PRINCIPAL Assistant Principal, EIS Administrative Assistant	SOOJOON CHOI Nicole Bootel Debra Ramirez	Telephone: 360-2288 Fax: 360-3264 Kennedy/NAHS/VAAS CoS
EMELITA ES (3589) 17931 Hatteras St. Encino, 91316	PRINCIPAL Assistant Principal, EIS Administrative Assistant	VACANT Maya Schaeffer Samar Azar	Telephone: 342-6353 Fax: 774-9352 Reseda CoS
ENADIA TECH CHARTER (3610) 22944 Enadia Way West Hills, 91307	PRINCIPAL Assistant Principal, EIS Administrative Assistant	HEATHER JEANNE Jeff Gerson Ruby Lozano	Telephone: 595-3900 Fax: 716-7738 CP/Chatsworth CoS
ENCINO CHARTER ES (3616) 16941 Addison St. Encino, 91316	PRINCIPAL Assistant Principal, EIS Administrative Assistant	JENNIFER HAWS Myron Breitstein Sandra Sexton	Telephone: 784-1762 Fax: 995-7110 Taft/Hale CoS

FULLBRIGHT ES (4027) 6940 Fullbright Ave. Canoga Park, 91306	PRINCIPAL Assistant Principal Assistant Principal, EIS Administrative Assistant	MICHAEL PAYNE Shannon Gordon Julie Castleberry Taunya Wells	Telephone: 340-6677 Fax: 340-1052 Cleveland CoS
GARDEN GROVE ES (4055) 18141 Valerio St. Reseda, 91335	PRINCIPAL Assistant Principal, EIS Administrative Assistant	EMILIO ARAUZ Julie Castleberry Jody Jackson	Telephone: 343-4762 Fax: 343-4793 Reseda CoS
GAULT ES (4110) 17000 Gault St. Van Nuys, 91406	PRINCIPAL Assistant Principal, EIS Administrative Assistant	ANTOINETTE BRUSCA Dan Hernandez Blanca Diaz	Telephone: 343-1933 Fax: 776-0237 Reseda CoS
GERMAIN ACAD ACHIEV (4117) 20730 Germain St. Chatsworth, 91311	PRINCIPAL Assistant Principal, EIS Administrative Assistant	LUIS LOPEZ Daisy Fernandez Maria Martinez	Telephone: 341-5821 Fax: 882-3599 CP/Chatsworth CoS
GLEDHILL ES/STM MAG (4130/4132) 16030 Gledhill St North Hills, 91343	PRINCIPAL Assistant Principal Assistant Principal, EIS Administrative Assistant	VACANT Consuelo Padilla Vacant Deborah Arndt	Telephone: 894-1151 Fax: 894-2462 Monroe CoS
GRANADA ES (4233) 17170 Tribune St. Granada Hills, 91344	PRINCIPAL Assistant Principal, EIS Administrative Assistant	LUIS ROJAS Erika Lai Laura Lopez	Telephone: 363-3188 Fax: 368-0821 Kennedy/NAHS/VAAS CoS
HAMLIN CHARTER ACAD (4349) 22627 Hamlin St. West Hills, 91307	PRINCIPAL Assistant Principal, EIS Administrative Assistant	LAURA SINGER Jennifer Phelps- Kosoy Marisela Martin	Telephone: 348-4741 Fax: 348-3506 CP/Chatsworth CoS
HART ES (4445) 21040 Hart St. Canoga Park, 91303	PRINCIPAL Assistant Principal Assistant Principal, EIS Administrative Assistant	CURTIS JOHNSON Geneva Mena Marquez Darren Baral Angie Gonzalez	Telephone: 340-6222 CP/Chatsworth CoS
HASKELL ES/MAG (4452/4453) 15850 Tulsa St. Granada Hills, 91344	PRINCIPAL Assistant Principal, EIS Administrative Assistant	CONNIE COVERT Rose Udicki Sean Rivas	Telephone: 366-6431 Fax: 360-4627 Kennedy/NAHS/VAAS CoS
HAYNES CHARTER CES (4473) 6624 Lockhurst Dr. West Hills, 91307	PRINCIPAL Assistant Principal, EIS Administrative Assistant	BARBARA MEADE Myron Breitstein Fay Haghighi	Telephone: 716-7310 Fax: 716-7249 Taft/Hale CoS
JUSTICE ACAD CHARTER (4692) 23350 Justice St. West Hills, 91304	PRINCIPAL Assistant Principal, EIS Administrative Assistant	CYNTHIA HERNANDEZ Janice Greenberg Michelle Graham	Telephone: 346-4388 Fax: 346-4649 Taft/Hale CoS
KNOLLWOOD PREP ACAD (4762) 11822 Gerald Ave. Granada Hills, 91344	PRINCIPAL Assistant Principal, EIS Administrative Assistant	CECILIA SALAZAR Mary Cardenas Dana Downs	Telephone: 363-9558 Fax: 832-9276 Kennedy/NAHS/VAAS CoS
LANAI ROAD ES (4764) 4241 Lanai Rd. Encino, 91316	PRINCIPAL Assistant Principal, EIS Administrative Assistant	MARIO THOMPSON Mindy Weiss Anastacia Mitrofanova	Telephone: 788-1590 Fax: 788-4263 Taft/Hale CoS
LANGDON AVE ES (4775) 8817 Langdon Ave. North Hills, 91343	PRINCIPAL Assistant Principal Assistant Principal EIS Administrative Assistant	ALFREDO MONTES Veronika Maronyan Kathleen Jackson Maria Estevez Carmona	Telephone: 892-0778 Fax: 892-8360 Monroe CoS

LASSEN ES (4790) 15017 Superior St. North Hills, 91343	PRINCIPAL Assistant Principal, EIS Administrative Assistant	UCHENNA UKEREKE Jacobco Diaz Rosa Salgado	Telephone: 892-8618 Fax: 892-5731 Monroe CoS
LEMAY ES (4849) 17520 Vanowen St. Van Nuys, 91406	PRINCIPAL Assistant Principal, EIS Administrative Assistant	LONG NGUYEN Behnaz Valamehr Lindsay Robles Duran	Telephone: 343-4696 Fax: 708-0549 Reseda CoS
LIGGETT ES (4870) 9373 Moonbeam Ave. Panorama City, 91402	PRINCIPAL Assistant Principal Assistant Principal, EIS Administrative Assistant	BRENDA OLORTEGUI Rosemary Mena Marissa Munoz Grace Quinoñez	Telephone: 892-4388 Fax: 830-0880 Monroe CoS
LIMERICK ES (4881) 8530 Limerick Ave. Canoga Park, 91306	PRINCIPAL Assistant Principal Assistant Principal, EIS Administrative Assistant	SONIA BARON Nikki Chrysiliou Deborah Dougall Dina Sanchez	Telephone: 341-1730 Fax: 998-4912 Cleveland CoS
LOCKHURST CHARTER ES (4887) 6170 Lockhurst Dr. Woodland Hills, 91367	PRINCIPAL Assistant Principal, EIS Administrative Assistant	VACANT Krista Bella Mary Ann Hernandez	Telephone: 888-5280 Fax: 346-0283 Taft/Hale CoS
LORNE ES/STM MAG (4973/4974) 17440 Lorne St. Northridge, 91325	PRINCIPAL Assistant Principal, EIS Administrative Assistant	LISA ELAN Claudio Gomez Elvia Pelayo	Telephone: 342-3123 Fax: 705-0860 Cleveland CoS
MAYALL ACAD. OF ARTS/TECH (5198) 16701 Mayall St. North Hills, 91343	PRINCIPAL Assistant Principal, EIS Administrative Assistant	LINDA KIM Edith Sanamyan Kathy Tran	Telephone: 363-5058 Fax: 831-3379 Kennedy/NAHS/VAAS CoS
MELVIN ES (5233) 7700 Melvin Ave. Reseda, 91335	PRINCIPAL Assistant Principal, EIS Administrative Assistant	LIZZA IRIZARRY Paula Cordoba Carla Garbutt	Telephone: 886-7171 Fax: 886-3658 Cleveland CoS
MOSK ES/ STEAM MAG (7402) 7335 N. Lubao Ave. Canoga Park, 91306	PRINCIPAL Assistant Principal, EIS Administrative Assistant	RACHELLE RATNER Marcello Lopez Karina Galicia	Telephone: 700-2020 Fax: 882-1490 Cleveland CoS
NAPA ST ES (5446) 19010 Napa St. Northridge, 91324	PRINCIPAL Assistant Principal, EIS Administrative Assistant	LUIS ALVARADO Jennifer Walker Sarah Rogers	Telephone: 885-1441 Fax: 993-4824 Cleveland CoS
NESTLE AVE CHARTER (5452) 5060 Nestle Ave. Tarzana, 91356	PRINCIPAL Assistant Principal, EIS Administrative Assistant	CHERYL GRAY-SORTINO Mark Garren Charles Bell	Telephone: 342-6148 Fax: 609-9864 Taft/Hale CoS
NEVADA AVE ES (5459) 22120 Chase St. Canoga Park, 91304	PRINCIPAL Assistant Principal, EIS Administrative Assistant	SARA BOBERTZ Barrie Gold Adriana Lima	Telephone: 348-2169 Fax: 592-0894 CP/Chatsworth CoS
NEWCASTLE ES (5479) 6520 Newcastle Ave. Reseda, 91335	PRINCIPAL Assistant Principal, EIS Administrative Assistant	JUDY GOITIA Maya Schaeffer Tulang Van	Telephone: 343-8795 Fax: 343-8864 Reseda CoS
PANORAMA CITY ES (5604) 8600 Kester Ave. Panorama City, 91402	PRINCIPAL Assistant Principal Assistant Principal, EIS Administrative Assistant	OLIVIA FLORES-TORRES Mary Ann Villuan Soledad Aranda Nydia Figueroa	Telephone: 895-4230 Fax: 895-2884 Monroe CoS

PARKS LRN CTR (3576) 8855 Noble Ave. North Hills, 91343	PRINCIPAL Assistant Principal Assistant Principal, EIS Administrative Assistant	MIRIAM KING Soo Jin Horio Araceli Hager Manuel Ceja	Telephone: 895-9620 Fax: 894-4711 Monroe CoS
PARTHENIA ACAD ARTS / TECH (6027) 16825 Napa St. North Hills, 91343	PRINCIPAL Assistant Principal Assistant Principal, EIS Administrative Assistant	PHILLIP HOLLIS Robert Benigno James Mueller Anna Ochoa	Telephone: 891-6955 Fax: 892-7467 Monroe CoS
PLUMMER ES (6123) 9340 Noble Ave. North Hills, 91343	PRINCIPAL Assistant Principal Assistant Principal, EIS Administrative Assistant	IBIA GOMEZ Gregg Ridenour Maria Manzo Ana Delgado	Telephone: 895-2481 Fax: 891-1594 Monroe CoS
POMELO COMM CHARTER (6140) 7633 March Ave. West Hills, 91304	PRINCIPAL Assistant Principal, EIS Administrative Assistant	JANICE GREENBERG James McGroarty Luz Sanchez	Telephone: 887-9700 Fax: 887-1744 Taft/Hale CoS
PRIMARY ACADEMY ES (4776) 9075 Willis Ave. Panorama City, 91402	PRINCIPAL Assistant Principal, EIS Administrative Assistant	DANIKA FREE Norma Villareal Alice Diaz	Telephone: 920-2932 Fax: 893-5718 Monroe CoS
RESEDA ES (6233) 7265 Amigo Ave. Reseda, 91335	PRINCIPAL Assistant Principal, EIS Administrative Assistant	ROSEMARIE KUBENA Laura Murphy Luz Adriana Lopez	Telephone: 343-1312 Fax: 705-7346 Reseda CoS
SAN JOSE ES/ HG MAG (6479/6480) 14928 Clymer St. Mission Hills, 91345	PRINCIPAL Assistant Principal Assistant Principal, EIS Administrative Assistant	CATHERINE ESTRADA Lisa Stevens Jessica Aschim Juan Reynoza	Telephone: 365-3218 Fax: 365-5067 Kennedy/NAHS/VAAS CoS
SANTANA ARTS ACADEMY (7404) 9301 Columbus Ave. North Hills, 91343	PRINCIPAL Assistant Principal Assistant Principal, EIS Administrative Assistant	BARBARA AVILEZ Erika Lanning Norma Villareal Michelle Cannata	Telephone: 920-4060 Fax: 894-4515 Monroe CoS
SERRANIA CHARTER CES (6606) 5014 Serrania Ave. Woodland Hills, 91364	PRINCIPAL Assistant Principal Assistant Principal, EIS Administrative Assistant	RASHEED KHAN Nancy Farish Maria Vallone Vanessa Nix Grine	Telephone: 340-6700 Fax: 592-0565 Taft/Hale CoS
SHIRLEY ES (6712) 19452 Hart St. Reseda, 91335	PRINCIPAL Assistant Principal, EIS Administrative Assistant	WING LEUNG David Esquenazi Patty Reese	Telephone: 342-6183 Fax: 774-9051 Reseda CoS
STAGG ST ES (6890) 7839 Amestoy Ave. Van Nuys, 91406	PRINCIPAL Assistant Principal, EIS Administrative Assistant	ANNA VALENZUELA Caralee Cromarty Crowley Tarynne Fraigun	Telephone: 881-9850 Fax: 609-8537 Cleveland CoS
SUNNY BRAE ES/GA MAG (6986) 20620 Arminta St. Canoga Park, 91306	PRINCIPAL Assistant Principal, EIS Administrative Assistant	DANA CARTER Mabel Landaverde Janaina Dazevedo	Telephone: 341-0931 Fax: 709-1232 Cleveland CoS
SUPERIOR ES (7007) 9756 Oso Ave. Chatsworth, 91311	PRINCIPAL Assistant Principal, EIS Administrative Assistant	CLAUDETTE WILLIAMSON Jeff Gerson Kamaili De La Paz	Telephone: 349-1410 Fax: 886-8748 CP/Chatsworth CoS

TARZANA ES (7041) 5726 Topeka Dr. Tarzana, 91356	PRINCIPAL Assistant Principal, EIS Administrative Assistant	RENEE COFIELD Michael DeMay Berenice Anzo	Telephone: 881-1424 Fax: 343-4418 Reseda CoS
TOPEKA DR CHARTER FOR ADV STUDIES 9815 Topeka Dr. Northridge, 91324	PRINCIPAL Assistant Principal, EIS Administrative Assistant	KATHERINE CHAVEZ Monica Multer Hailey Liska	Telephone: 886-2266 Fax: 885-7682 CP/Chatsworth CoS
TULSA ES (7247) 10900 Hayvenhurst Ave. Granada Hills, 91344	PRINCIPAL Assistant Principal, EIS Administrative Assistant	LESTER POWELL Iris Walker-Richmond Karolin Lutfi	Telephone: 363-5061 Fax: 831-6935 Kennedy/NAHS/VAAS Cabinet
VAN GOGH CHARTER ES (7422) 17160 Van Gogh St. Granada Hills, 91344	PRINCIPAL Assistant Principal, EIS Administrative Assistant	VACANT Heide Felix Andrea Viglietta Pichler	Telephone: 360-2141 Fax: 831-9081 Kennedy/NAHS/VAAS CoS
VANALDEN ES (7411) 19019 Delano St. Reseda, 91335	PRINCIPAL Assistant Principal, EIS Administrative Assistant	YOSHIM YANG Maria Maravilla Yoohee Howard	Telephone: 342-5131 Fax: 996-5109 Reseda CoS
VINTAGE MAG ES(7562) 15848 Stare St. North Hills, 91343	PRINCIPAL Assistant Principal Assistant Principal, EIS Administrative Assistant	NANCY WILLIAMS-MOURAO Buffy Bravo Mariann Macias Gloria Trejo	Telephone: 892-8661 Fax: 830-9456 Monroe CoS
WELBY WAY ES CHARTER/ G MAG (7637/7638) 23456 Welby Way West Hills, 91307	PRINCIPAL Assistant Principal, EIS Assistant Principal Administrative Assistant	SUSAN DaCORSI Janice Greenberg Vacant Alexia Zepeda	Telephone: 348-1975 Fax: 704-8726 Taft/Hale CoS
WILBUR CHARTER CES (7774) 5213 Crebs Ave. Tarzana, 91356	PRINCIPAL Assistant Principal, EIS Assistant Principal Administrative Assistant	CRYSTAL SHIRLEY Elizabeth Baxter Karen Marroquin-Kim Elizabeth Gallegos	Telephone: 345-1090 Fax: 881-8128 Taft/Hale CoS
WINNETKA ES (7836) 8240 Winnetka Ave. Winnetka, 91306	PRINCIPAL Assistant Principal Assistant Principal, EIS Administrative Assistant	TANYA NOTT Juan Magdaleno Melissa Thomas Gemma Cabrera	Telephone: 341-5422 Fax: 998-1871 Cleveland CoS
WOODLAKE CMTY CHARTER (7877) 23231 Hatteras St. Woodland Hills, 91367	PRINCIPAL Assistant Principal, EIS Administrative Assistant	AMY PEDERSEN Julie Ljubicic Diane Ross	Telephone: 347-7097 Fax: 883-3953 Taft/Hale CoS
WOODLAND HILLS CHARTER (7890) 22201 San Miguel St. Woodland Hills, 91364	PRINCIPAL Assistant Principal Assistant Principal, EIS Administrative Assistant	CHRISTINA DESIDERIO Vacant Karen Mullin Norma Munguia	Telephone: 347-9220 Fax: 347-2365 Taft/Hale CoS

MIDDLE SCHOOLS

COLUMBUS MS/ MAG (8102) 22250 Elkwood St. Canoga Park, 91304	PRINCIPAL Assistant Principal Assistant Principal Administrative Assistant	LISA HAMILTON James Ramirez Soheil Mashhoud Lucy Petrosyan	Telephone: 702-1200 Fax: 348-2894 CP/Chatsworth CoS
FROST MS/STM MAGNET (8137) 12314 Bradford Pl. Granada Hills, 91344	PRINCIPAL Assistant Principal Assistant Principal, SCS Administrative Assistant	ELMER CHOE Lisa Nunez Ari Meir Marta Rodriguez	Telephone: 832-6900 Fax: 360-9584 Kennedy/NAHS/VAAS CoS
HALE /G/STEAM MAG (8169)(5235) 23830 Califa St. Woodland Hills, 91367	PRINCIPAL Assistant Principal Assistant Principal Assistant Principal Assistant Principal, SCS Administrative Assistant	HENRY SONG Paul DeBonis Ahsaf Meir Goldman Claudia Perez Shauna Lehtihalme Elizabeth Medina Sals	Telephone: 313-7400 Fax: 346-7517 Taft/Hale CoS
HENRY MS/MAGNET (8174) 17340 San Jose St. Granada Hills, 91344	PRINCIPAL Assistant Principal Assistant Principal Assistant Principal Assistant Principal, SCS Administrative Assistant	KRISTI SANTI Ernesto Bernal Nicole Bootel Christopher Perdiago Vacant Scarleth Garton	Telephone: 832-3870 Fax: 368-7333 Kennedy/NAHS/VAAS CoS
HESBY OAKS LEAD ACAD (4521) 15530 Hesby St. Encino, 91436	PRINCIPAL Assistant Principal, EIS Administrative Assistant	MOVSES TARAKHCHYAN Jose Castillo Linda Cheshire	Telephone: 528-7000 Fax: 907-0788 Reseda CoS
HOLMES MS/MAGNET (8182) 9351 Paso Robles Ave. Northridge, 91325	PRINCIPAL Assistant Principal Assistant Principal, SCS Administrative Assistant	KIM D'ALOISIO Mari Ann Aguilar Thelma Ponce Celeste Robinson	Telephone: 678-4100 Fax: 886-3358 Monroe CoS
LAWRENCE MS/MAGNET (8217)(8218) 10100 Variel Ave. Chatsworth, CA 91311	PRINCIPAL Assistant Principal Assistant Principal Assistant Principal, SCS Administrative Assistant	MARILÚ PIGLIAPOCO Vacant Carlos Renderos Vacant Ana Martinez	Telephone: 678-7900 Fax: 349-4539 CP/Chatsworth CoS
MULHOLLAND MS/MAG (8259) 17120 Vanowen St. Van Nuys, 91406	PRINCIPAL Assistant Principal Assistant Principal, SCS Administrative Assistant	RAQUEL SEGAL Mercy Momary Vacant Natalia Oliveto	Telephone: 609-2500 Fax: 345-1933 Reseda CoS
NOBEL MS/MAGNET (8272) 9950 Tampa Ave. Northridge, 91324	PRINCIPAL Assistant Principal Assistant Principal Assistant Principal Assistant Principal, SCS Administrative Assistant	DEREK HOROWITZ Rosana Bates Kevin Watts Karen Turner Cornelia Romey Marie Ferry	Telephone: 773-4700 Fax: 701-9480 CP/Chatsworth CoS
NORTHRIDGE MS/MAGNET (8283) 17960 Chase St. Northridge, 91325	PRINCIPAL Assistant Principal Assistant Principal, SCS Administrative Assistant	RICHARD RAMOS Nerina Facio Vacant Daisy Cortes	Telephone: 678-5100 Fax: 885-1461 Cleveland CoS

PORTER MS/MAGNET (8354) 15960 Kingsbury St. Granada Hills, 91344	PRINCIPAL Assistant Principal Assistant Principal, SCS Administrative Assistant	DAWN GUEST-JOHNSON Kimberly Meyer Kathy Torres Ramona Ochoa	Telephone: 920-2050 Fax: 891-7826 Kennedy/NAHS/VAAS CoS
PORTER RANCH COM. (2303) (K-8) 12450 Mason Ave. Porter Ranch, CA 91326	PRINCIPAL Assistant Principal Assistant Principal, EIS Administrative Assistant	AVAK DEMIRJE Ivet Diaz María Casiano Donna Patterson	Telephone: 709-7100 Fax: 993-1363 CP/Chatsworth CoS
PORTOLA MS/MAG (8107) 18720 Linnett St. Tarzana, 91356	PRINCIPAL Assistant Principal Assistant Principal Assistant Principal SCS Administrative Assistant	KIMBERLY ESTRADA Mindy Park Rebecca Garcia Karen Perry Roxanne Meza	Telephone: 654-3300 Fax: 996-0892 Taft/Hale CoS
SEPULVEDA MS/MAG (8363) 15330 Plummer St. North Hills, 91343	PRINCIPAL Assistant Principal Assistant Principal Assistant Principal, SCS Administrative Assistant	GABRIEL ORTEGA Lawrence Hom Michael Press Salvador Rodriguez Heather Fayuant	Telephone: 920-2130 Fax: 891-5754 Monroe CoS
SUTTER MS/MAG (8406) 7330 Winnetka Avenue Winnetka, 91306	PRINCIPAL Assistant Principal Assistant Principal Assistant Principal Administrative Assistant	KELLY WELSH Michelle Campos Michael Harrington Shawn Guidry Josselin Avalos	Telephone: 773-5800 Fax: 341-3039 Cleveland CoS
WOODLAND HILLS ACADEMY MS (8344) 20800 Burbank Blvd. Woodland Hills, 91367	PRINCIPAL Assistant Principal Administrative Assistant	ALMA SALAZAR Jeffrey Brand Taphi Chau	Telephone: 226-2900 Fax: 716-0649 Taft/Hale CoS

HIGH SCHOOLS

CANOGA PARK HS/MAGNET (8571/8572) 6850 Topanga Canyon Blvd. Canoga Park, 91303	PRINCIPAL Assistant Principal Assistant Principal Assistant Principal Assistant Principal, SCS Administrative Assistant	ROBERT GARCIA Jacqueline Gil Kaylyn Redmond Tony Recalde Caryn Michaels Takui Jambazian	Telephone: 673-1300 Fax: 702-8942 CP/Chatsworth CoS
CHATSWORTH CHARTER HS (8583) 10027 Lurline Ave. Chatsworth, 91311	PRINCIPAL Assistant Principal Assistant Principal Assistant Principal Assistant Principal, SCS Administrative Assistant	TIM GUY Christina Trevino McHenry Diana Kim Stephen Foster Laura Voets Maria Harris	Telephone: 678-3400 Fax: 709-6952 CP/Chatsworth CoS
CLEVELAND CHTR HS/MAG (8590/8593) 8140 Vanalden Ave. Reseda, 91335	PRINCIPAL Assistant Principal Assistant Principal Assistant Principal Assistant Principal Administrative Assistant	CINDY DUONG Sonya Cole Damian Goodman Vacant Patricia Russell Stephanie Slaughter Melissa Romero	Telephone: 885-2300 Fax: 727-0964 Cleveland CoS

KENNEDY HS/MAG (8725/8724) 11254 Gothic Ave. Granada Hills, 91344	PRINCIPAL Assistant Principal Assistant Principal Assistant Principal Assistant Principal Administrative Assistant	RICHARD CHAVEZ Irvin Castañeda Kevin Chong Susan Sim Kim Eric Huang Georgina Torres	Telephone: 271-2900 Fax: 368-9527 Kennedy/NAHS/VAAS CoS
LAKE BALBOA COLLEGE PREPARATORY MAGNET K-12 (7390) 6701 Balboa Blvd. Lake Balboa, 91406	PRINCIPAL Assistant Principal, Assistant Principal, EIS Administrative Assistant	ROBERT CLARKE Jaqueline Morrow Susan Rich Sandra Aldaba	Telephone: 342-6133 Fax: 342-8645 Reseda CoS
MONROE HS (8768) 9229 Haskell Ave. North Hills, 91343	PRINCIPAL Assistant Principal Assistant Principal Assistant Principal Assistant Principal Assistant Principal, SCS Administrative Assistant	MATHEW DIAMOND Anna Harzmann Ximena Rodriguez Ana Mejia Michael Swanston Reggie Quemuel Monica Rodriguez	Telephone: 830-4200 Fax: 892-5622 Monroe CoS
NORTHRIDGE ACADEMY (8513) 9601 Zelzah Ave. Northridge, 91325	PRINCIPAL Assistant Principal Assistant Principal Assistant Principal Administrative Assistant	NIDIA CASTRO Vacant Vacant James Oh Mireya Guzman	Telephone: 700-2222 Fax: 718-2239 Kennedy/NAHS/VAAS CoS
PEARL MAGNET (8558) 6649 Balboa Blvd. Van Nuys, 91406	PRINCIPAL Administrative Assistant	ARMEN PETROSSIAN Jennifer Miranda	Telephone: 654-3775 Fax: 881-1013 Cleveland CoS
RESEDA CHARTER HS (8814) 18230 Kittridge St. Reseda, 91335	PRINCIPAL Assistant Principal Assistant Principal Assistant Principal Assistant Principal Assistant Principal, EIS Administrative Assistant	MELANIE WELSH Nicole Nigosian Alicia Onadja Vatche Terzian Laurie Vallejo T. Andrew Kim Corina Palomera	Telephone: 758-3600 Fax: 776-0452 Reseda CoS
SHERMAN OAKS CES (8842) 18605 Erwin St. Reseda, 91335 (Grades 4-12)	PRINCIPAL Assistant Principal Assistant Principal Assistant Principal Assistant Principal Administrative Assistant	SUSAN PARKER Davina Cunningham Floyd Weldon William Crockett Dana Neill Wynter Walker	Telephone: 758-5600 Fax: 344-5909 Reseda CoS
TAFT CHARTER HS (8880) 5461 Winnetka Ave. Woodland Hills, 91364	PRINCIPAL Assistant Principal Assistant Principal Assistant Principal Assistant Principal, SCS Administrative Assistant	DANIEL STEINER Yun J. Yu Jose Loza Neezer McNab Javier Tapia Rosa Feliciano	Telephone: 227-3600 Fax: 592-0877 Taft/Hale CoS
VALLEY ACADEMY OF ARTS & SCIENCE (8898) 10445 Balboa Blvd. Granada Hills, 91344	PRINCIPAL Assistant Principal Assistant Principal Assistant Principal Administrative Assistant	KELLY HANOCK Malaika Evans Loreanne Gervacio Natalie Petrossian Blanca Mata	Telephone: 832-7750 Fax: 368-5140 Kennedy/NAHS/VAAS CoS

ALTERNATIVE EDUCATION SCHOOLS

ADDAMS HS (8726) 16341 Donmetz St. Granada Hills, 91344	PRINCIPAL Office Manager	SALVADOR ARAGON Vacant	Telephone: 271-2946 Fax: 271-2569 Kennedy/NAHS/VAAS CoS
AGGELER OPPORTUNITY/CDS (8507) 21050 Plummer St Chatsworth, 91311 Chatsworth, 91311	PRINCIPAL Assistant Principal Office Manager Office Manager	JUAN ORTIZ Vanessa Cardoza Alicia Alvarado Alicia Alvarado	Telephone: 341-1232 Fax: 349-1404 CP/Chatsworth CoS CP/Chatsworth CoS
EINSTEIN HS (8770) 15938 Tupper St. North Hills, 91343	PRINCIPAL Office Manager	JAZMIN AYALA Sylvia Caballero	Telephone: 892-4367 Fax: 893-3423 Monroe CoS
GREY HS (8816) 18230 Kittridge St. Reseda, 91335	PRINCIPAL Office Manager	LUCINDA BURTON Edelmira Sanchez	Telephone: 758-3769 Fax: 758-3714 Reseda CoS
INDEPENDENCE HS (8559) 6501 Balboa Blvd. Van Nuys, 91406	PRINCIPAL Office Manager	BRIAN SIDA Beatriz Guillen	Telephone: 881-7737 Fax: 609-0764 Reseda CoS
OWENSMOUTH HS (8573) 6921 Jordan Ave. Canoga Park, 91303	PRINCIPAL Office Manger	ALEX PLACENCIO Elida Perez-Rubalcava	Telephone: 340-7663 Fax: 340-2947 CP/Chatsworth CoS
STONEY POINT HS (8585) 10010 De Soto Ave. Chatsworth, 91311	PRINCIPAL Office Manager	BARBARA JEPSON Monica Parga Diyarza	Telephone: 678-3491 Fax: 773-1796 CP/Chatsworth CoS
THOREAU HS (8883) 5429 Quakertown Ave. Woodland Hills	PRINCIPAL Office Manager	ERIC DIAZ Patricia Gutierrez	Telephone: 340-4395 Fax: 347-4235 Taft/Hale CoS
WOODEN HS (8591) 18741 Elkwood St. Reseda, 91335	PRINCIPAL Office Manager	LAURA NOVAK Maria Sonora	Telephone: 345-0203 Fax: 996-9008 Cleveland CoS

SPECIAL EDUCATION SCHOOLS

LEICHMAN CAREER PREPARATORY AND TRANSITION CENTER (1908) 19034 Gault St. Reseda, 91335	PRINCIPAL Assistant Principal Administrative Assistant	JENNIFER HUBBARD Vacant Elida Martin	Telephone: 881-5341 Fax: 881-4606 Reseda CoS
LOKRANTZ SP ED CENTER (1947) 19451 Wyandotte St. Reseda, 91335	PRINCIPAL Assistant Principal, EIS Administrative Assistant	JENNIFER HUBBARD Sara Breuninger Vacant	Telephone: 886-8980 Fax: 886-3537 Reseda CoS
MILLER CAREER AND TRANSITION CENTER 8218 Vanalden Ave. Reseda, 91335	PRINCIPAL Assistant Principal Administrative Assistant	TIMOTHY SWEENEY Danielle Donoho Angelia Morris	Telephone: 885-1646 Fax: 773-0179 Cleveland CoS

EARLY EDUCATION CENTERS

CANOGA PARK EEC (9592) 7355 Vassar Ave. Canoga Park, 91303	PRINCIPAL Assistant Principal, EIS Office Manager	CAROLYN GELFAND Ricardo Ayala Camille Harris	Telephone: 348-2814 Fax: 888-5736 CP/Chatsworth CoS
CHASE EEC (9460) 8635 Colbath Ave. Panorama City, 91402	PRINCIPAL Assistant Principal, EIS Office Manager	SANDY CHEN Morena Camp Rosalba Palucho-Aguirre	Telephone: 830-4455 Fax: 892-7472 Monroe CoS
CLEVELAND EEC & INF CTR (9491) (8588) 19031 W. Strathern St. Reseda, 91335	PRINCIPAL Assistant Principal, EIS Office Manager	LESA GAINES Vacant Bertha Galvan	Telephone: 885-3677 Fax: 727-0964 Cleveland CoS
GLEDHILL EEC (9578) 16058 Gledhill St. North Hills, 91343	PRINCIPAL Assistant Principal, EIS Office Manager	CAROLINA GOMEZ Maria Maravilla Olivia Barrios	Telephone: 895-2491 Fax: 892-7731 Monroe CoS
LEMAY EEC (9530) 17553 Lemay St. Lake Balboa, 91406	PRINCIPAL Assistant Principal, EIS Office Manager	JASON ROSALES Maya Schaeffer Adriana Galvez	Telephone: 345-0731 Fax: 343-0911 Reseda CoS
NORTHRIDGE EEC (8284) 18050 Chase St. Northridge, 91325	PRINCIPAL Assistant Principal, EIS Office Manager	LUIS SANCHEZ Claudio Gomez Krissia Tochez	Telephone: 678-5190 Fax: 885-1461 Cleveland CoS
VANALDEN EEC (9542) 6212 Vanalden Ave. Reseda, 91335	PRINCIPAL Assistant Principal, EIS Office Manager	ROSSANA ASTRAQUILLO Maria Maravilla Blanca Ayala Contreras	Telephone: 343-5595 Fax: 996-0353 Reseda CoS

VIRTUAL ACADEMY

STEAM VIRTUAL ACADEMY 6505 Zelzah Ave Reseda, CA 91335	PRINCIPAL Welcome Center: Zelzah Offices	MARIA OZAETA	Telephone: 323-673-5544 Email: STEAMVirtualAcademy@lausd.net
INTERNATIONAL STUDIES AND WORLD LANGUAGES 8501 Arleta Ave Sun Valley, 91352	PRINCIPAL Welcome Center: Byrd MS	TOYA TATE-ROSE	Telephone: 747-316-2533 Email: ISWLVirtualAcademy@lausd.net
ARTS & ENTERTAINMENT 14755 Greenleaf St. Sherman Oaks, 91403	PRINCIPAL Welcome Center: Sherman Oaks ES	VERONICA BROWN	Telephone: 424-444-0488 Email: AEVirtualAcademy@lausd.net
STEAM LEADERSHIP & PUBLIC SERVICE 14755 Greenleaf St. Sherman Oaks, 91403	PRINCIPAL Welcome Center: Sherman Oaks ES	TERESA IZQUERDA	Telephone: 213-316-9840 Email: SLPSVirtualAcademy@lausd.net
STEAM BUSINESS & ENTREPRENEURSHIP 19451 Wyandotte St. Reseda, CA 91335	PRINCIPAL Welcome Center: Lokrantz Sp. Ed. Ctr.	MARCO TOLJ	Telephone: 818-821-0336 Email: STEAMVirtualAcademy@lausd.net
COMPUTER SCIENCE 6505 Zelzah Ave Reseda, CA 91335	PRINCIPAL Welcome Center: Zelzah Offices	KATIE HONG	Telephone: 424-429-4228 Email: CSVirtualAcademy@lausd.net

[Back to Table of Contents](#)